



Stocktaking webinar on safe school reopening and school readiness assessment

Examples of successful/promising processes and tools towards safe school reopening

Ecuador

Koenraad Vancraeynest, WASH Specialist, UNICEF Ecuador

Education sector in Ecuador

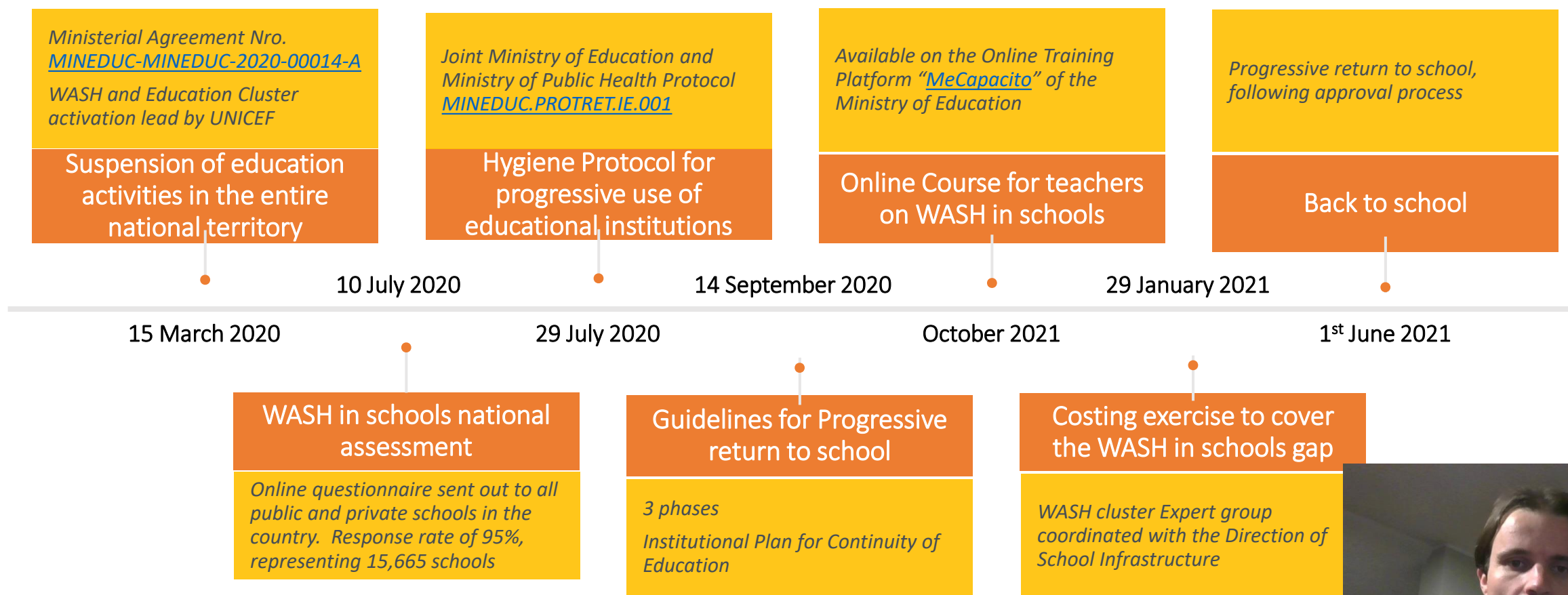
16,000 schools
(primary/secondary)

4,4 million children

220,000 teachers



Process and tools

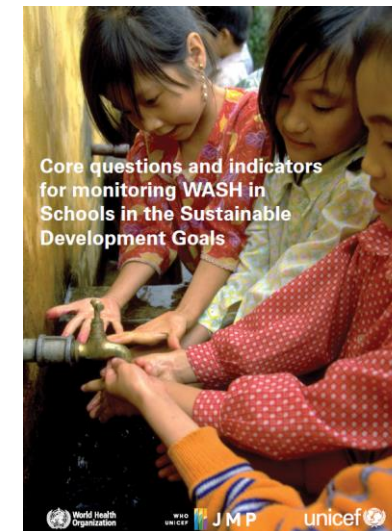


WASH in schools national assessment



- Joint initiative between Information, Infrastructure and Risk Management directions of MoE, with UNICEF technical assistance
- Online questionnaire sent to all school directors nationwide
- Questionnaire based on the [“Core questions for Monitoring WASH in Schools \(JMP\)”](#)
- Video tutorial
- 95% response rate
(15,665/16,474 schools) 10 days after launching the questionnaire
- Water, sanitation and hygiene service level known for each school countrywide

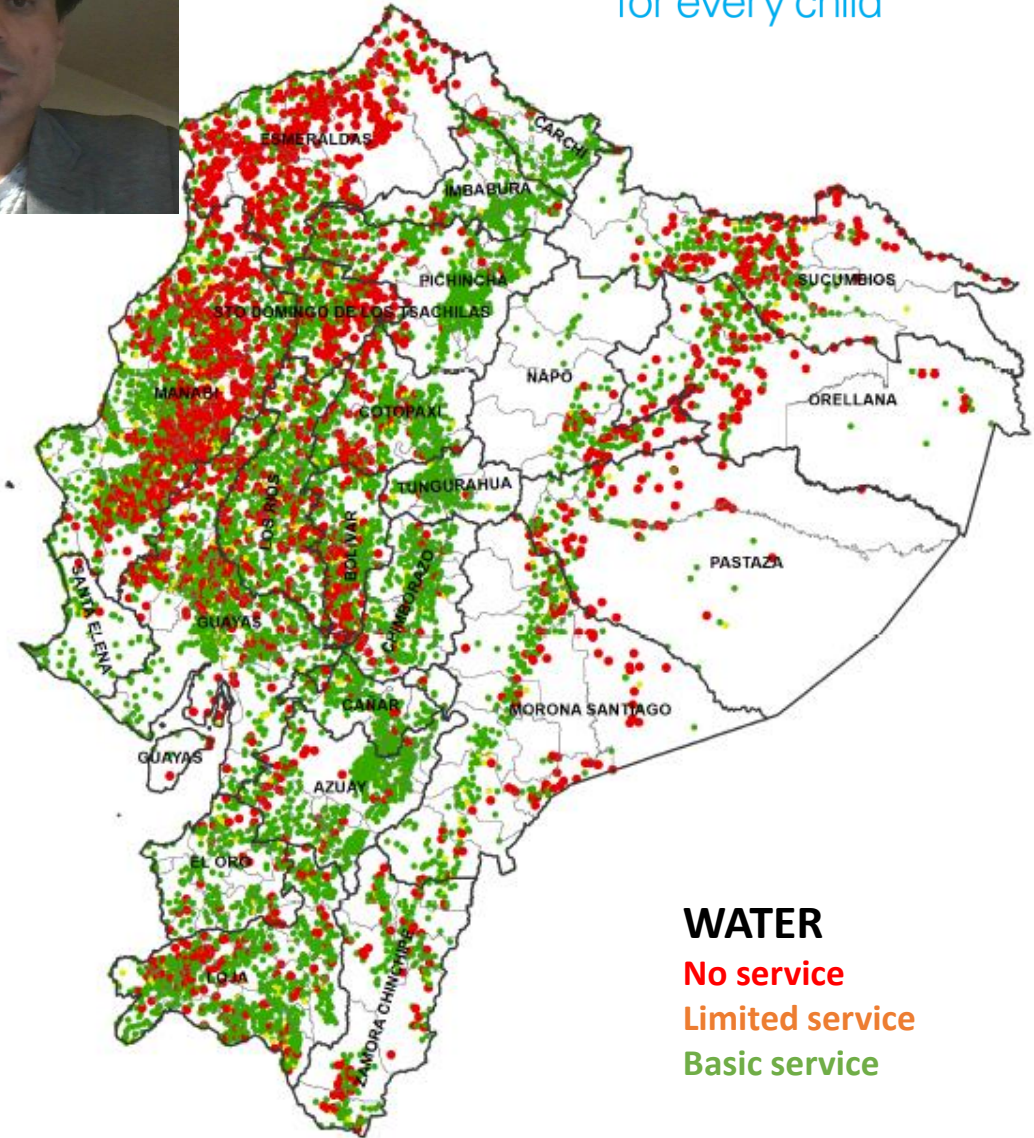
The image shows two screenshots of the WASH in Schools questionnaire. The left screenshot is titled '2. Selección de la institución educativa' and contains two sections: '2.1 Registre el código AMIE de su Institución Educativa' with a text input field, and '2.2 Registre la posición de la institución educativa' which includes a map and fields for latitude, longitude, altitude, and precision. The right screenshot is titled '5. LAVAMANOS: estado y disponibilidad' and contains two sections: '5.1 Indique el número TOTAL de lavamanos COLECTIVOS que existen para los estudiantes (en cantidad de grifos de agua)' with three radio button options (1. En Buen estado, 2. En Regular estado, 3. En Mal estado), and '5.2 Indique el número TOTAL de lavamanos INDIVIDUALES que existen para los estudiantes (en cantidad de grifos de agua disponibles)' with two radio button options (1. En Buen estado, 2. En Regular estado).



WASH in schools national assessment



- Joint initiative between Information, Infrastructure and Risk Management directions of MoE, with UNICEF technical assistance
- Online questionnaire sent to all school directors nationwide
- Questionnaire based on the [“Core questions for Monitoring WASH in Schools \(JMP\)”](#)
- Video tutorial
- 95% response rate
(15,665/16,474 schools) 10 days after launching the questionnaire
- Water, sanitation and hygiene service level known for each school countrywide

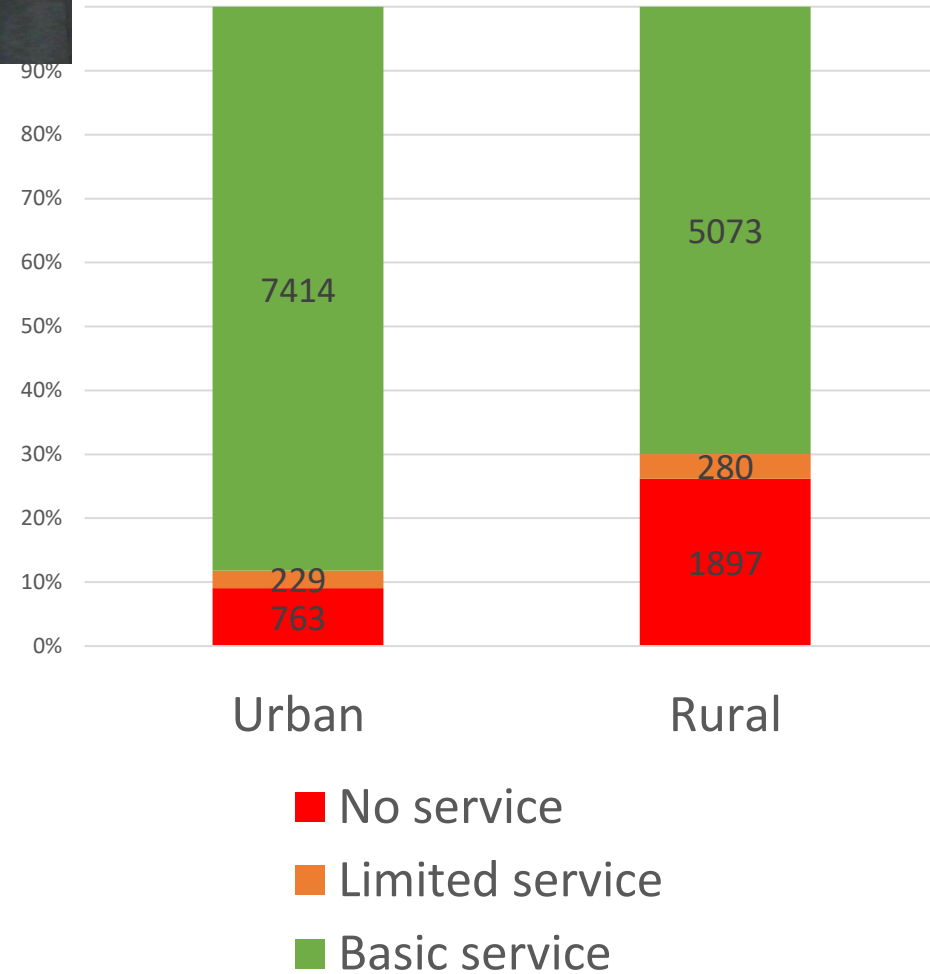


WASH in schools national assessment



- Joint initiative between Information, Infrastructure and Risk Management directions of MoE, with UNICEF technical assistance
- Online questionnaire sent to all school directors nationwide
- Questionnaire based on the [“Core questions for Monitoring WASH in Schools \(JMP\)”](#)
- Video tutorial
- 95% response rate
(15,665/16,474 schools) 10 days after launching the questionnaire
- Water, sanitation and hygiene service level known for each school countrywide

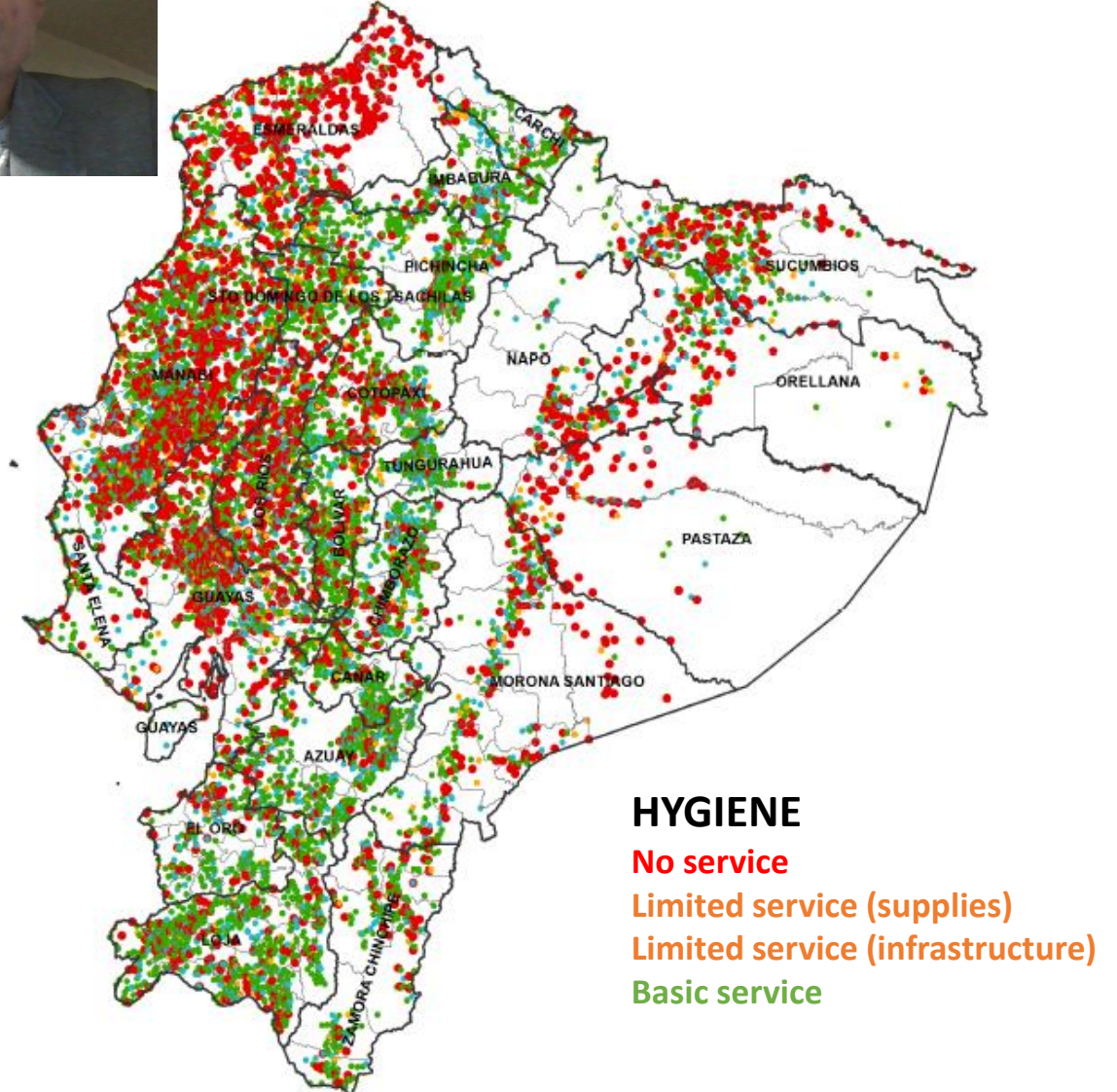
Water service in schools



WASH in schools national assessment



- Joint initiative between Information, Infrastructure and Risk Management directions of MoE, with UNICEF technical assistance
- Online questionnaire sent to all school directors nationwide
- Questionnaire based on the [“Core questions for Monitoring WASH in Schools \(JMP\)”](#)
- Video tutorial
- 95% response rate
(15,665/16,474 schools) 10 days after launching the questionnaire
- Water, sanitation and hygiene service level known for each school countrywide

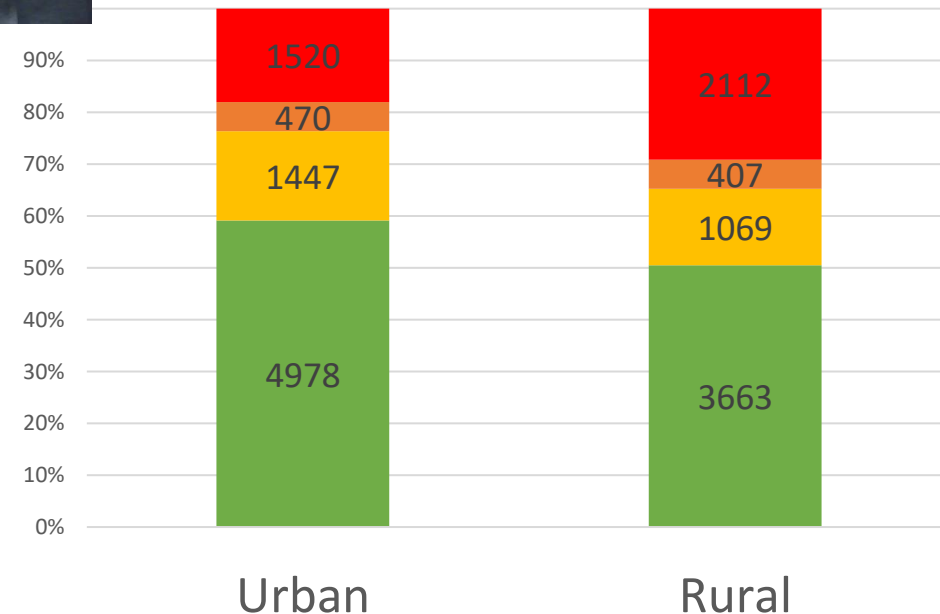


WASH in schools national assessment



- Joint initiative between Information, Infrastructure and Risk Management directions of MoE, with UNICEF technical assistance
- Online questionnaire sent to all school directors nationwide
- Questionnaire based on the [“Core questions for Monitoring WASH in Schools \(JMP\)”](#)
- Video tutorial
- 95% response rate
(15,665/16,474 schools) 10 days after launching the questionnaire
- Water, sanitation and hygiene service level known for each school countrywide

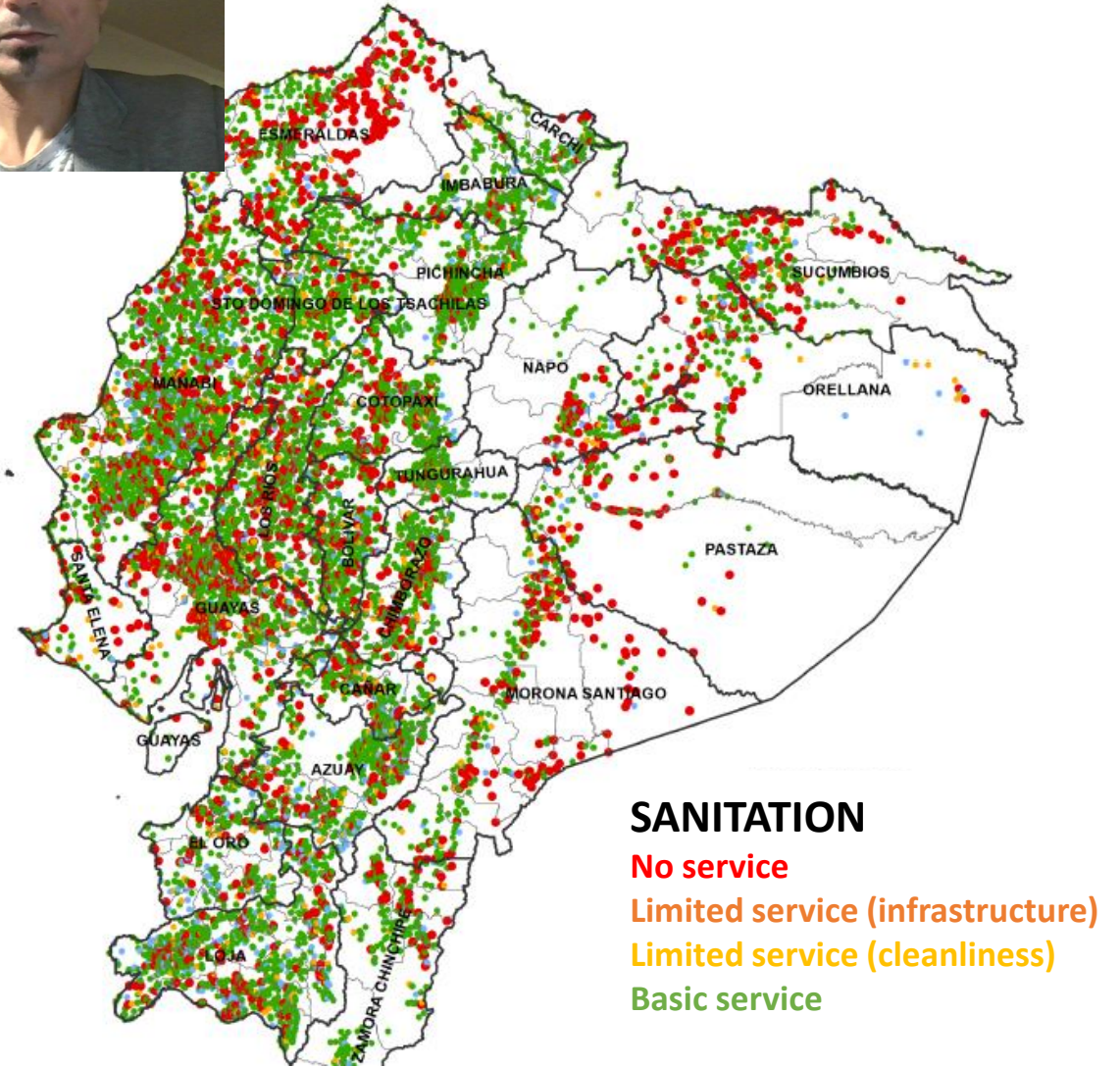
Hygiene service in schools



- No service
- Limited service (infrastructure)
- Limited service (supplies)
- Basic service

WASH in schools national assessment

- Joint initiative between Information, Infrastructure and Risk Management directions of MoE, with UNICEF technical assistance
- Online questionnaire sent to all school directors nationwide
- Questionnaire based on the [“Core questions for Monitoring WASH in Schools \(JMP\)”](#)
- Video tutorial
- 95% response rate
(15,665/16,474 schools) 10 days after launching the questionnaire
- Water, sanitation and hygiene service level known for each school countrywide

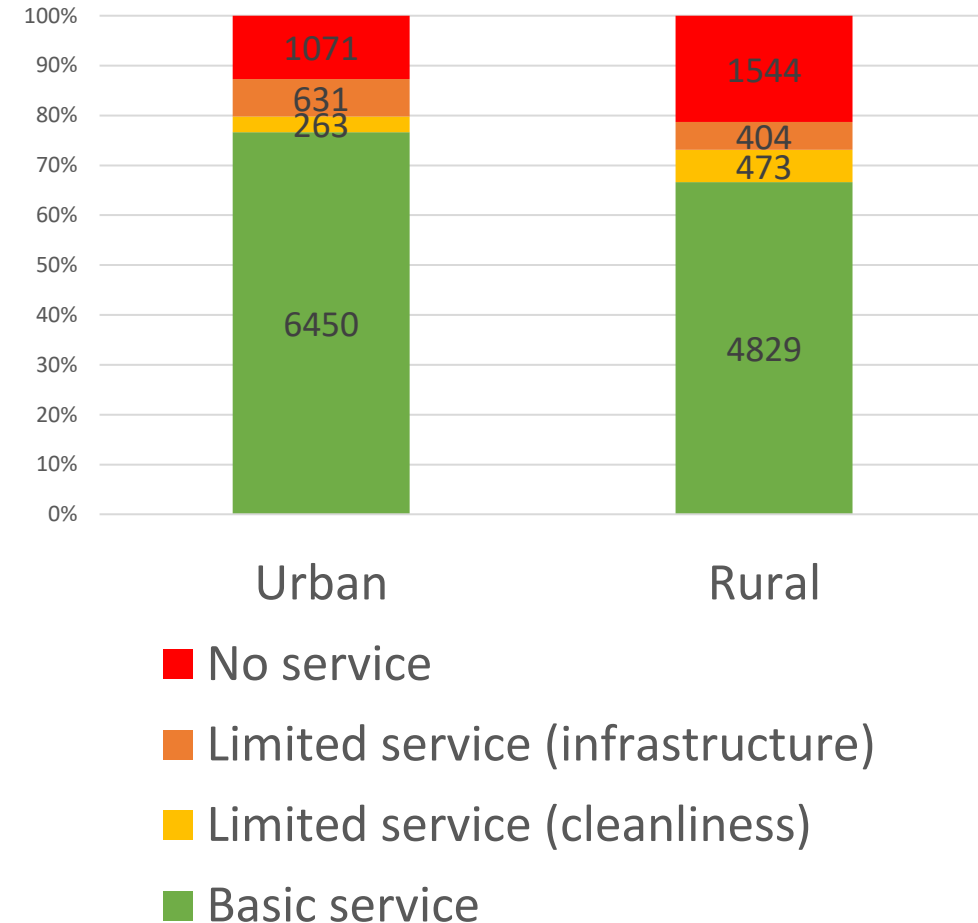


WASH in schools national assessment

- Joint initiative between Information, Infrastructure and Risk Management directions of MoE, with UNICEF technical assistance
- Online questionnaire sent to all school directors nationwide
- Questionnaire based on the [“Core questions for Monitoring WASH in Schools \(JMP\)”](#)
- Video tutorial
- 95% response rate
(15,665/16,474 schools) 10 days after launching the questionnaire
- Water, sanitation and hygiene service level known for each school countrywide



Sanitation service in schools



Hygiene Protocol for progressive use of educational institutions

Precautions to take in mind



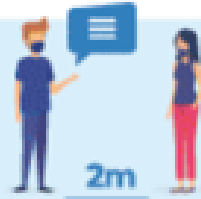
Use of mask is mandatory



Wash your hands with soap frequently



Avoid touching your face with your hands



Maintain 2 meters distance between persons



Disinfect frequently used areas



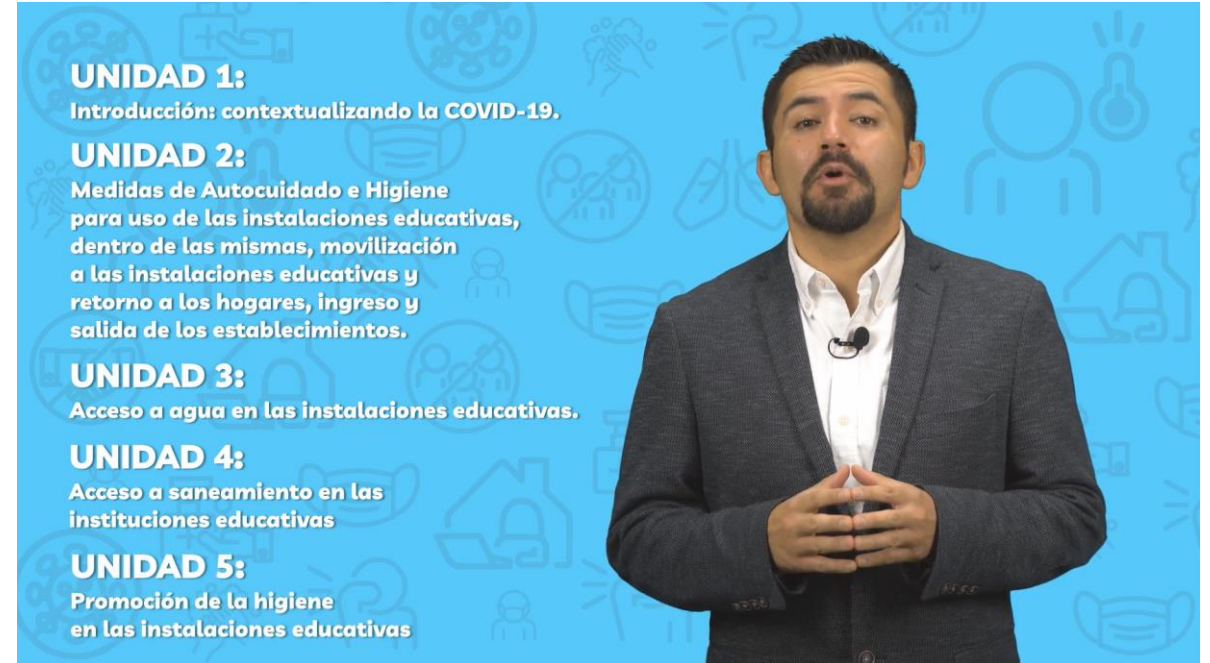
Stay at home when presenting symptom

<https://educacion.gob.ec/wp-content/uploads/downloads/2020/08/Protocolo-para-el-autocuidado-e-higiene-de-la-poblacion-educativa-covid-19.pdf>



Online course for teachers on WASH in schools in COVID-19 context

- Online Course, available on the oficial MoE training platform
- Developed with Support from UNICEF and PLAN
- 5 training modules
- 9 sessions have been developed so far
- 14,044 teachers have completed the course



UNIDAD 1:
Introducción: contextualizando la COVID-19.

UNIDAD 2:
Medidas de Autocuidado e Higiene para uso de las instalaciones educativas, dentro de las mismas, movilización a las instalaciones educativas y retorno a los hogares, ingreso y salida de los establecimientos.

UNIDAD 3:
Acceso a agua en las instalaciones educativas.

UNIDAD 4:
Acceso a saneamiento en las instituciones educativas

UNIDAD 5:
Promoción de la higiene en las instalaciones educativas



Back to school: PICE

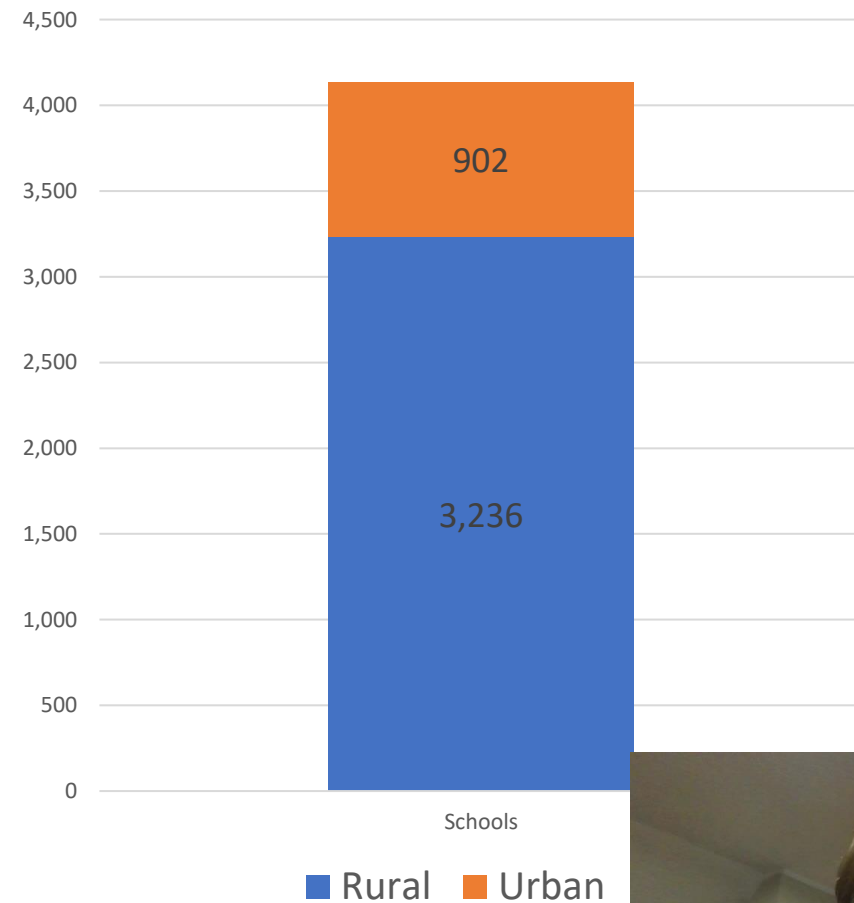
Institutional Plan for Continuity of Education, scholar permanency and progressive use of installations

General objective:

Establish agreements and consensus within the educational community to guarantee continuity, educational permanency of all students and the progressive use of the educational installations

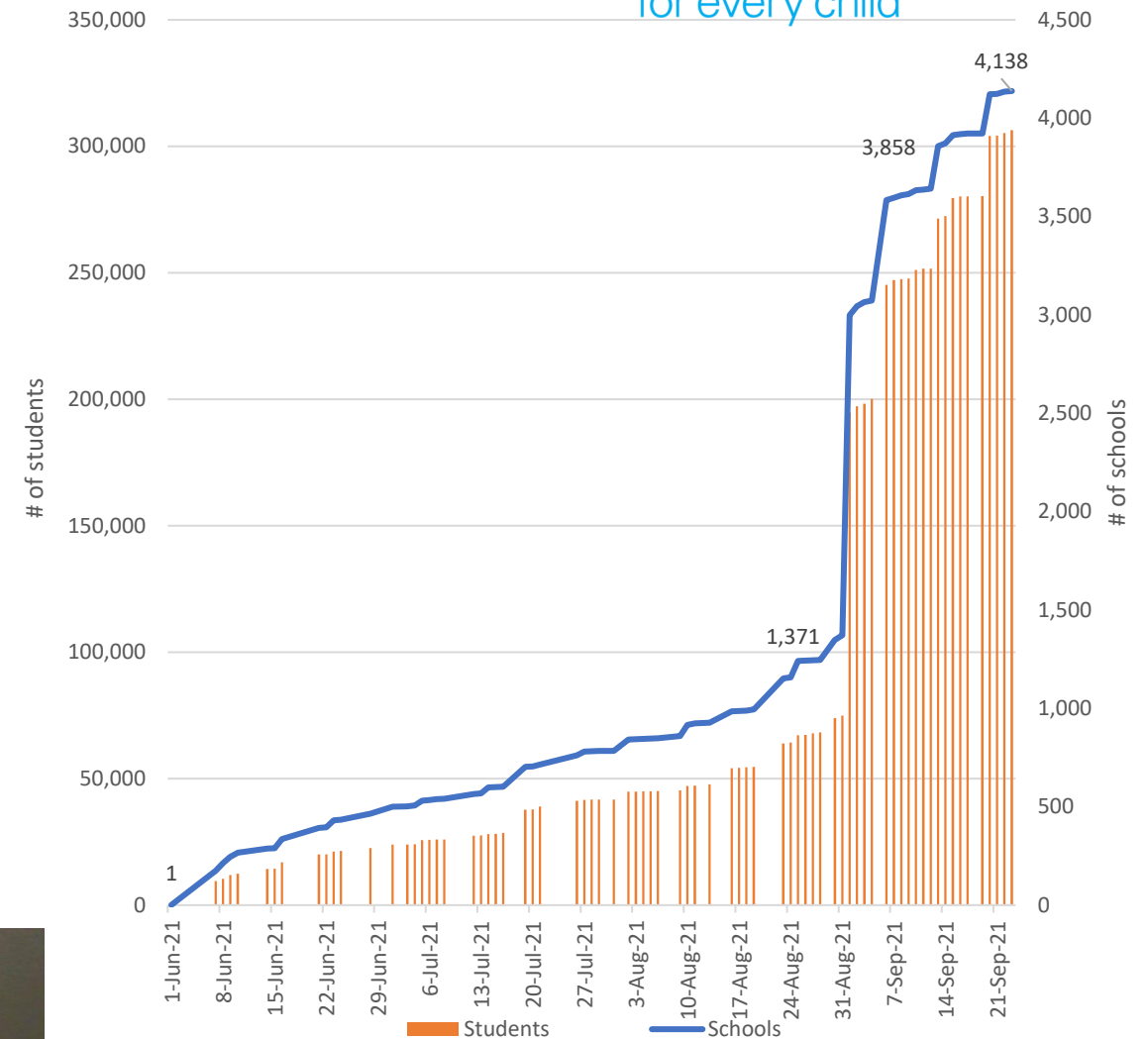
- ✓ Implementation of actions to comply with hygiene protocol
- ✓ Local revision by MoE and MoH

Approved PICE
As of September 23th, 2021



Back to school: progressive return to presential education

- Priority for rural schools
- Aprox. 25% of all schools with semi-presential education
- 81% public schools
- Monitoring of COVID-19 cases related to school reopening (MoH)
- UNICEF Support for 138 small rural schools: WASH kit



Estimating the cost to cover the gap on WASH in schools

- Based on unit costs for interventions to scale up service levels:
No service > Limited service > Basic service > Advanced service
- Total investment needed to cover the gap: USD 163.6 Million
- Urgent investment needed for COVID-19 hygiene (mainly soap and disinfectant): USD 20.4 Million
- UNICEF support for small rural schools: +/- USD 28 / student



Conclusions



https://www.youtube.com/watch?v=mO-Kgk_8er8

- Limited WASH services in schools resulted in high vulnerability in sanitary emergency
- MoE leadership and technical assistance from cooperation were crucial
- Evidence of the relevance of WASH in schools for continuity of education





Thank you



Koenraad Vancraeynest
WASH Specialist, UNICEF Ecuador
kvancraeynest@unicef.org