

WaSH in Schools:  
**Updates and lessons learned on  
WASH in Schools and safe school  
reopening during COVID-19**  
**-Ecuador-**



13th annual Water and Health Conference  
UNC Water Institute

Koenraad Vancraeynest, WASH Specialist, UNICEF Ecuador

# Education sector in Ecuador

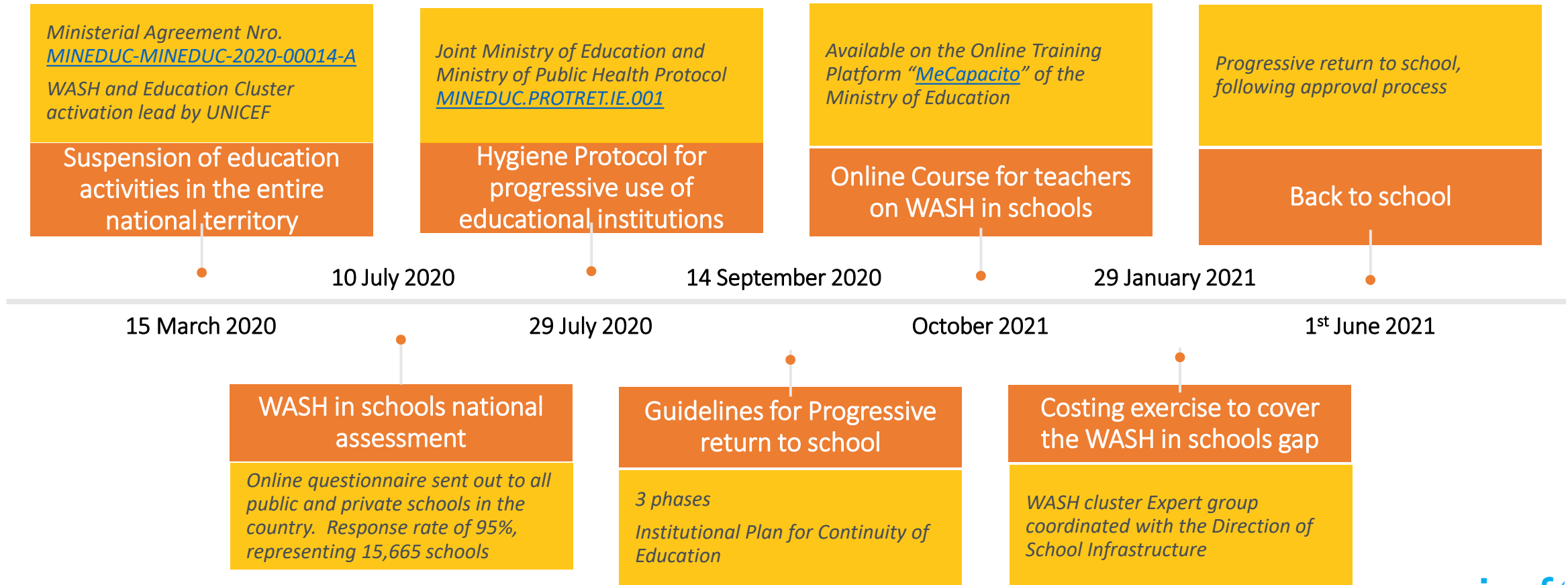
16,000 schools  
(primary/secondary)

4,4 million children

220,000 teachers

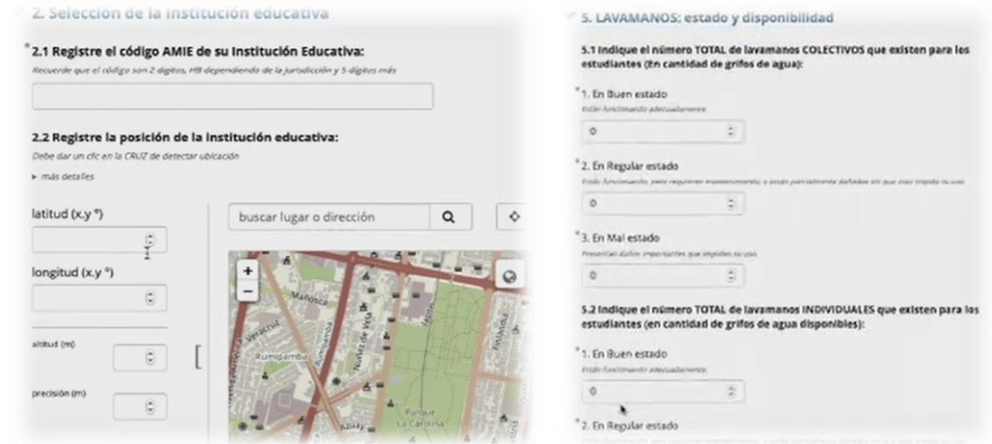


# Process and tools

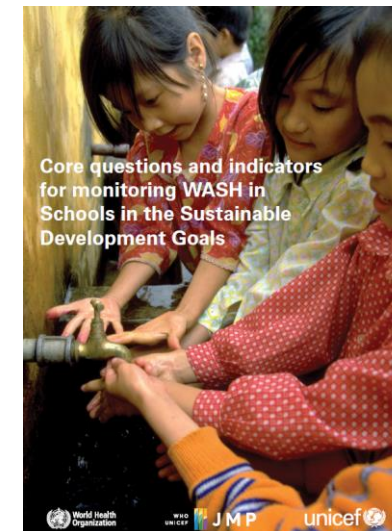


# WASH in schools national assessment

- Joint initiative between Information, Infrastructure and Risk Management directions of MoE, with UNICEF technical assistance
- Online questionnaire sent to all school directors nationwide
- Questionnaire based on the [“Core questions for Monitoring WASH in Schools \(JMP\)”](#)
- Video tutorial
- 95% response rate  
(15,665/16,474 schools) 10 days after launching the questionnaire
- Water, sanitation and hygiene service level known for each school countrywide



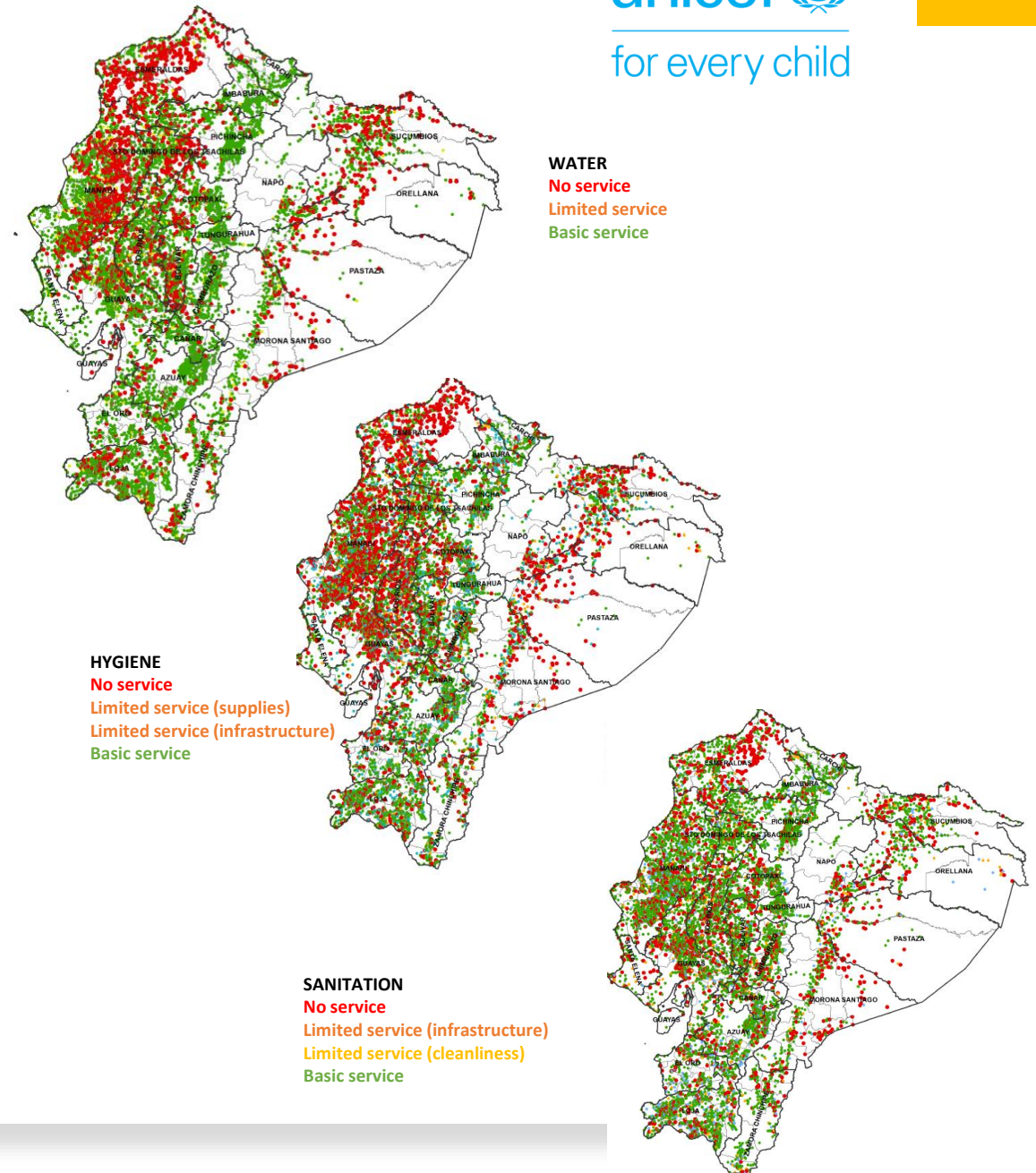
The screenshot displays two parts of the online questionnaire. The left part, titled '2. Selección de la institución educativa', includes a field for the AMIE code (2.1) and a map-based location selection tool (2.2) with input fields for latitude, longitude, altitude, and precision. The right part, titled '5. LAVAMANOS: estado y disponibilidad', contains questions about the number and condition of collective (5.1) and individual (5.2) handwashing facilities, with dropdown menus for 'En Buen estado', 'En Regular estado', and 'En Mal estado'.





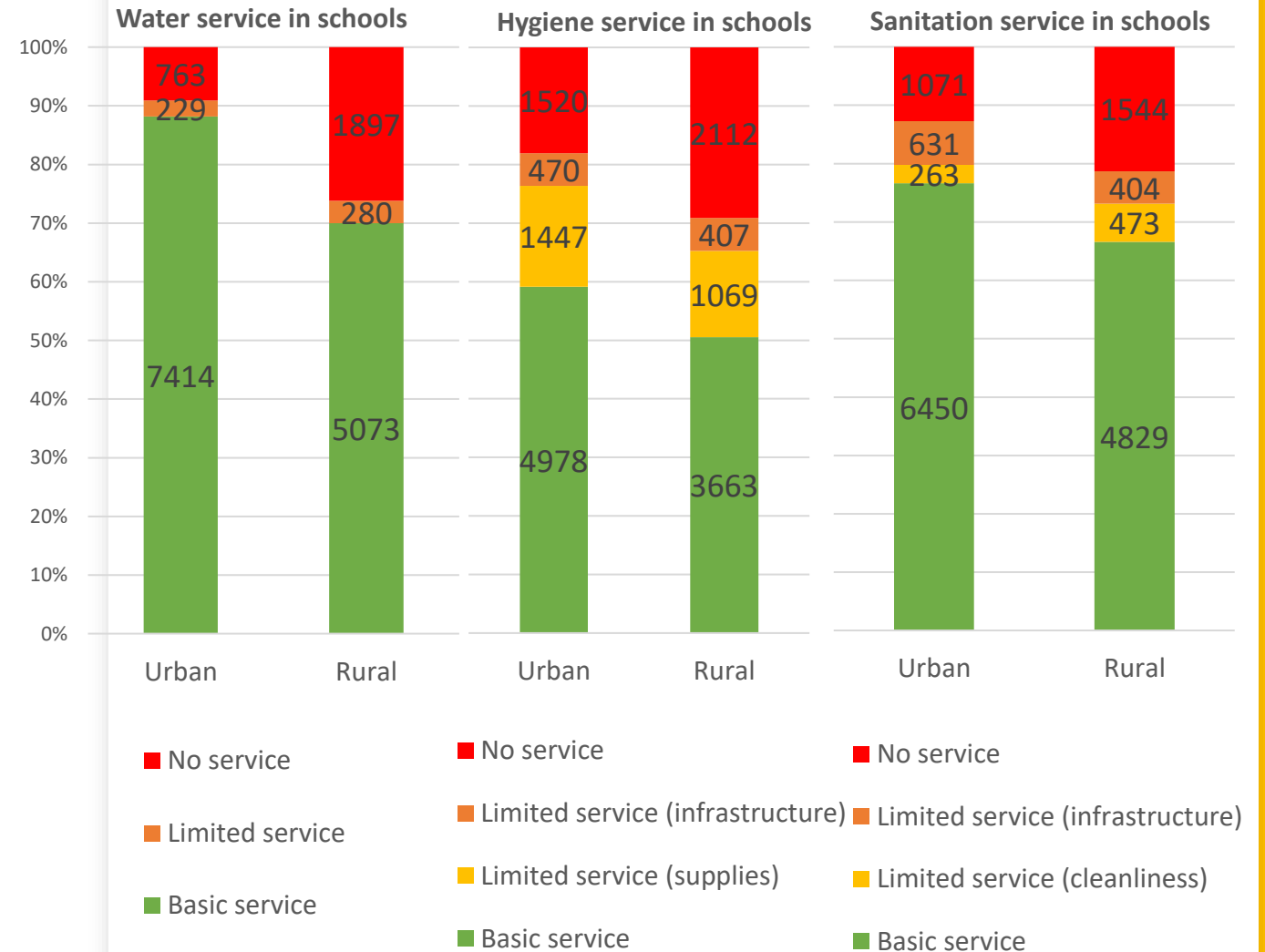
# WASH in schools national assessment

- Joint initiative between Information, Infrastructure and Risk Management directions of MoE, with UNICEF technical assistance
- Online questionnaire sent to all school directors nationwide
- Questionnaire based on the [“Core questions for Monitoring WASH in Schools \(JMP\)”](#)
- Video tutorial
- 95% response rate  
(15,665/16,474 schools) 10 days after launching the questionnaire
- Water, sanitation and hygiene service level known for each school countrywide



# WASH in schools national assessment

- Joint initiative between Information, Infrastructure and Risk Management directions of MoE, with UNICEF technical assistance
- Online questionnaire sent to all school directors nationwide
- Questionnaire based on the [“Core questions for Monitoring WASH in Schools \(JMP\)”](#)
- Video tutorial
- 95% response rate  
(15,665/16,474 schools) 10 days after launching the questionnaire
- Water, sanitation and hygiene service level known for each school countrywide



## Hygiene Protocol for progressive use of educational institutions

### Precautions to take in mind



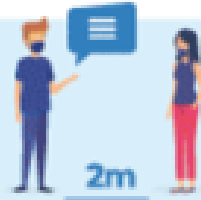
Use of mask is mandatory



Wash your hands with soap frequently



Avoid touching your face with your hands



Maintain 2 meters distance between persons



Disinfect frequently used areas

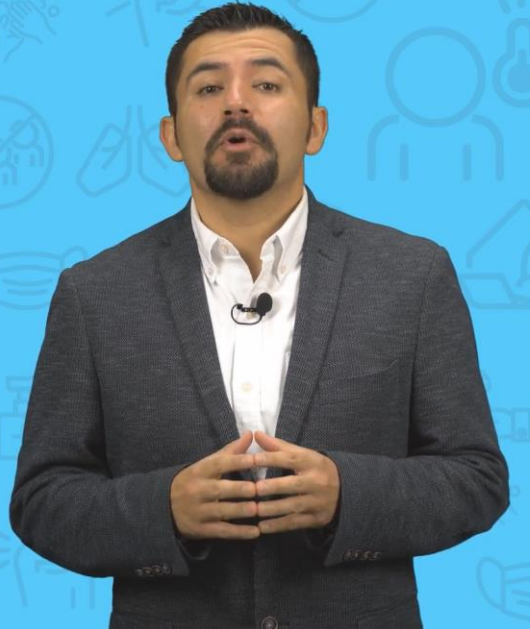


Stay at home when presenting symptoms

## Online course for teachers on WASH in schools in COVID-19 context

---

- Online Course, available on the oficial MoE training platform
- Developed with Support from UNICEF and PLAN
- 5 training modules
- 9 sessions have been developed so far
- 14,044 teachers have completed the course



**UNIDAD 1:**  
Introducción: contextualizando la COVID-19.

**UNIDAD 2:**  
Medidas de Autocuidado e Higiene para uso de las instalaciones educativas, dentro de las mismas, movilización a las instalaciones educativas y retorno a los hogares, ingreso y salida de los establecimientos.

**UNIDAD 3:**  
Acceso a agua en las instalaciones educativas.

**UNIDAD 4:**  
Acceso a saneamiento en las instituciones educativas

**UNIDAD 5:**  
Promoción de la higiene en las instalaciones educativas



## Back to school: PICE

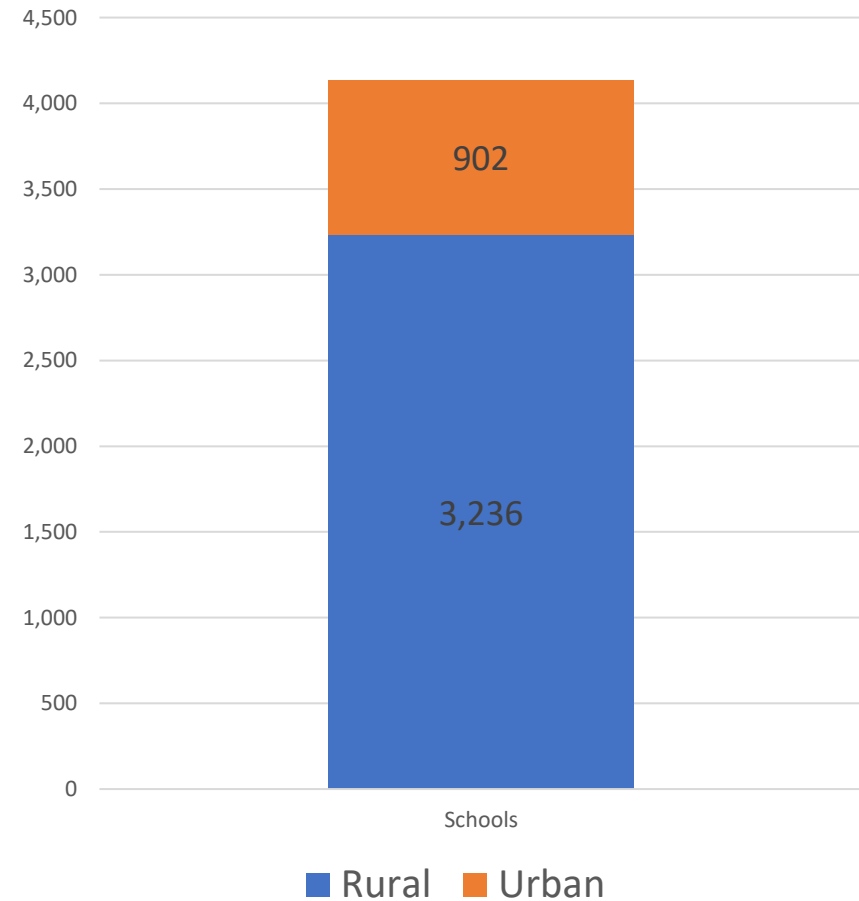
Institutional Plan for Continuity of Education, scholar permanency and progressive use of installations

### General objective:

Establish agreements and consensus within the educational community to guarantee continuity, educational permanency of all students and the progressive use of the educational installations

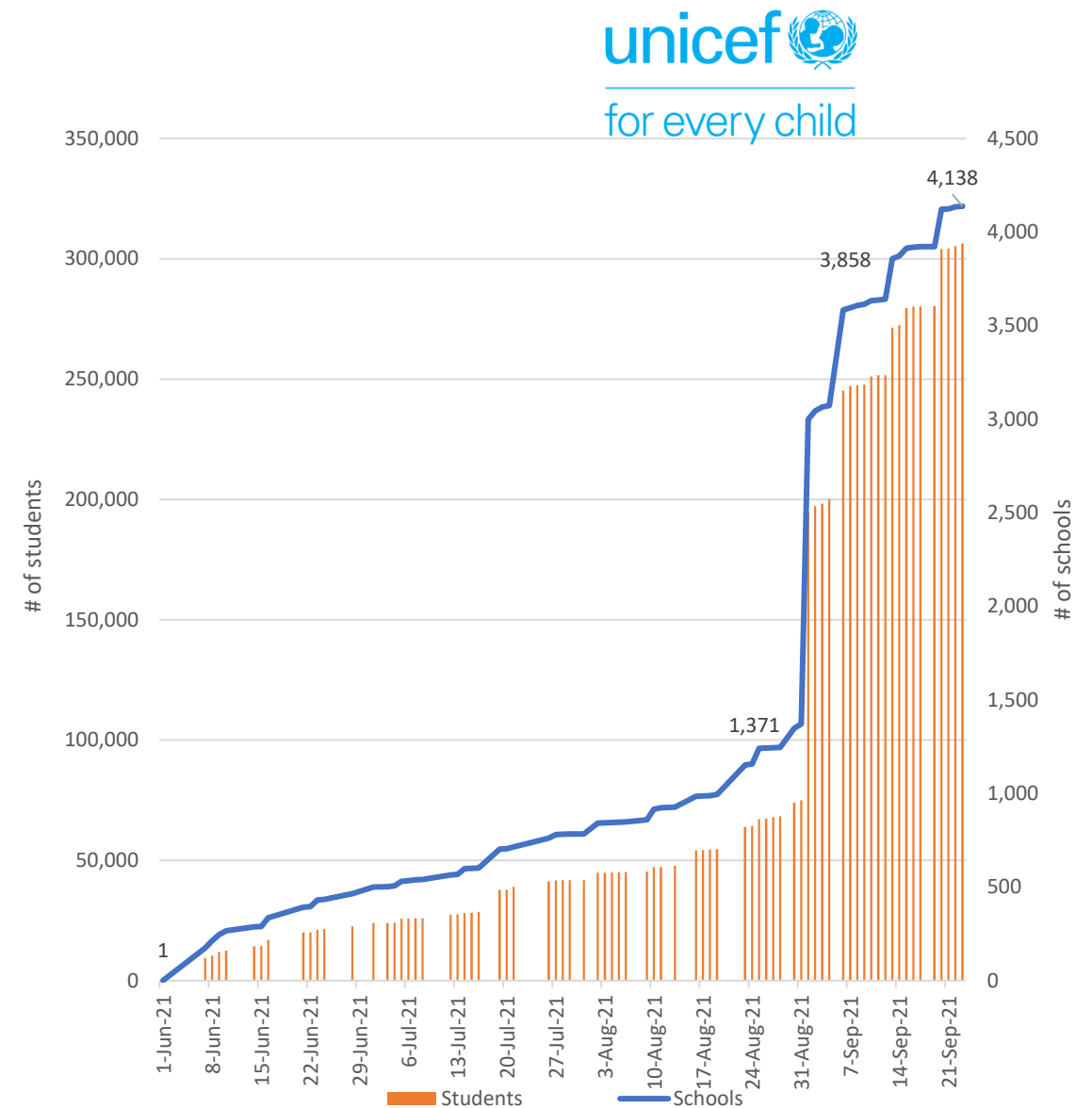
- ✓ Implementation of actions to comply with hygiene protocol
- ✓ Local revision by MoE and MoH

Approved PICE  
As of September 23th, 2021



# Back to school: progressive return to presential education

- Priority for rural schools
- Aprox. 25% of all schools with semi-presential education
- 81% public schools
- Monitoring of COVID-19 cases related to school reopening (MoH)
- UNICEF Support for 138 small rural schools: WASH kit



## Estimating the cost to cover the gap on WASH in schools

- Based on unit costs for interventions to scale up service levels:  
No service > Limited service > Basic service > Advanced service
- Total investment needed to cover the gap: USD 163.6 Million
- Urgent investment needed for COVID-19 hygiene (mainly soap and disinfectant): USD 20.4 Million
- UNICEF support for small rural schools: +/- USD 28 / student



# Conclusions



[https://www.youtube.com/watch?v=mO-Kgk\\_8er8](https://www.youtube.com/watch?v=mO-Kgk_8er8)

- Limited WASH services in schools resulted in high vulnerability in sanitary emergency
- MoE leadership and technical assistance from cooperation were crucial
- Evidence of the relevance of WASH in schools for continuity of education



Thank you



Koenraad Vancraeynest  
WASH Specialist, UNICEF Ecuador  
[kvancraeynest@unicef.org](mailto:kvancraeynest@unicef.org)